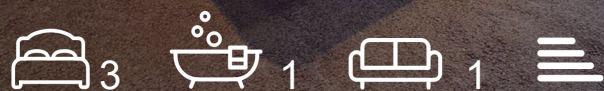


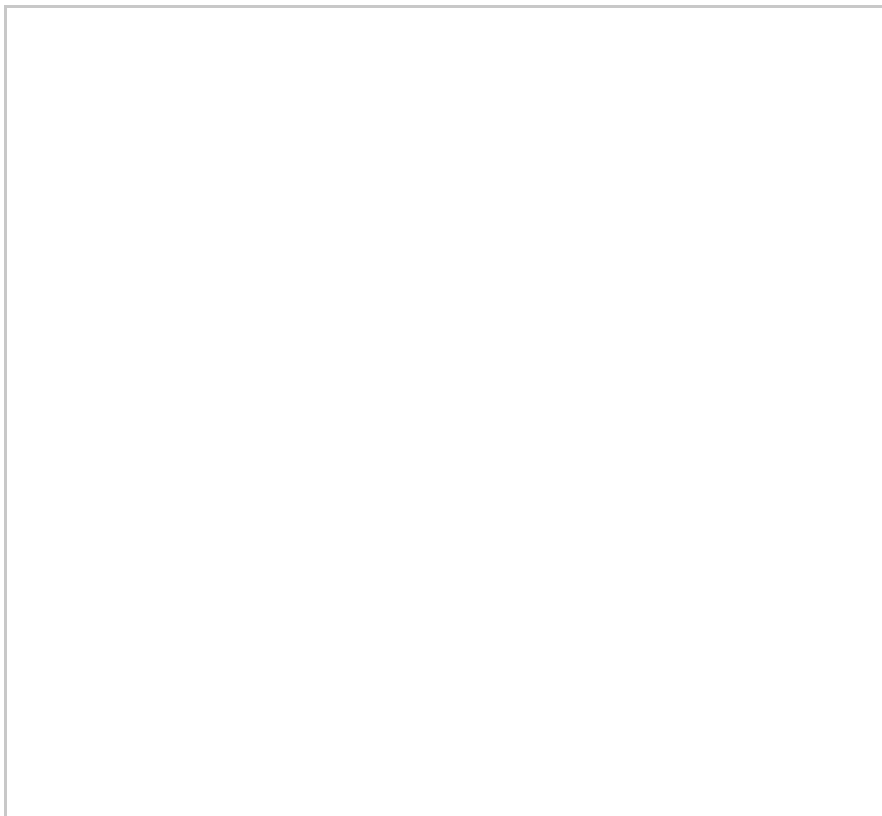
4 East Vale, The Vale

, London, W3 7RU

£2,500



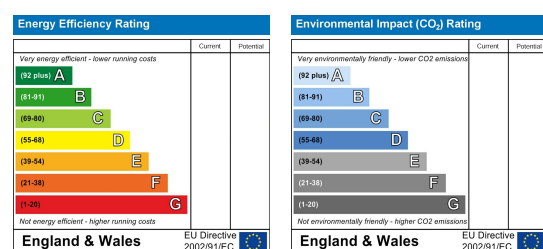
Floor Plan



Area Map

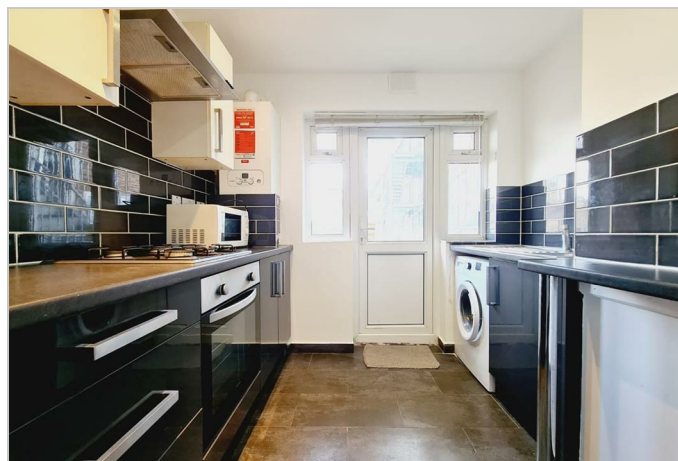


Energy Efficiency Graph



Viewing

Please contact our Sunshine Estates Office on 020 8066 5055 if you wish to arrange a viewing appointment for this property or require further information.

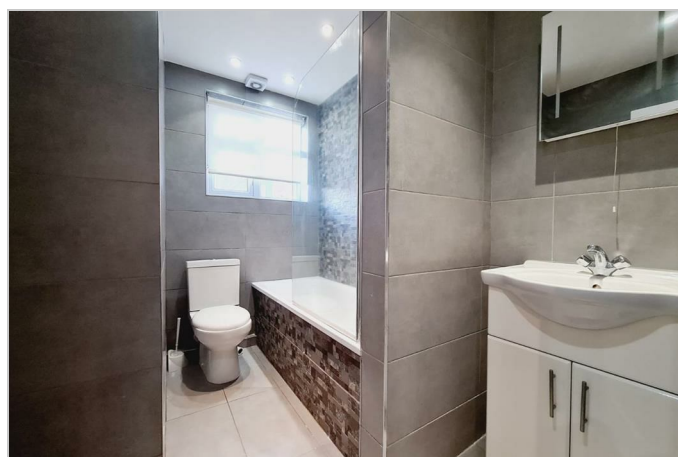


We are delighted to welcome to the market this 3 bedroom flat centrally located in Ealing close to Shepherd's Bush. Many shops and restaurants at your doorstep and close to public transport.

The flat is in great condition and consists of:

- Kitchen (all white goods included).
- Separate Lounge.
- 3 Bedrooms.
- 1 Bathroom.

Available now! Please contact us today to arrange a viewing.



These particulars, whilst believed to be accurate are set out as a general outline only for guidance and do not constitute any part of an offer or contract. Intending purchasers should not rely on them as statements of representation of fact, but must satisfy themselves by inspection or otherwise as to their accuracy. No person in this firm's employment has the authority to make or give any representation or warranty in respect of the property.

134 High Road, London, England, N15 6JN

Tel: 020 8066 5055 Email: office@sunshineestates.co.uk www.sunshineestates.co.uk